

# LLIA 2018 Annual Meeting Minutes

May 16, 2018

1. **Kyle Axtell – Rice Creek Watershed District, Water Resource Specialist/Project Manager**
  - a. Targeted Watershed Project will be wrapping up this year.
    - i. Re-meander is online to reduce and retain sediment that is brought into the lake along with phosphorus/Algae blooms. (See attachments below)
    - ii. Ramsey County Ditch 2 in Hanson Park to wrap up this fall. Replaced the dam and dredged the pond. Installed an iron enhance sand filter that will remove phosphorous. Water will be much cleaner than it has in the past. (See attachments below)
    - iii. Mirror Pond Improvement Project – Deeper dredging and planting to remove sediment and phosphorus.
    - iv. Carp Management – Low Voltage electronic barriers have been highly effective and playing with the options to remove large number of carp in a predictable manner. This will be an ongoing management program for the lake to control the carp. Winter netting is unpredictable in its success due to snagging and tearing. (See attachments below)
  - b. AIS Delineation Mapping:
    - i. Curly Leaf Pondweed – A long winter with thick ice is detrimental to CLP and Long Lake didn't have a significant amount last year. Hence, RCWD will not be surveying. Also, CLP needs to be treated in a specific temperature window, which will be difficult this year since the lake will be heating up quickly.
    - ii. Milfoil – Will be surveyed early to mid June. This is done to support the homeowners and LLIA.
  - c. Erosion Control
    - i. Grant funding is still available for shoreline restoration
    - ii. RCWD does not work with County to restore park shoreline.
  - d. AIS Monitoring
    - i. Ramsey county does AIS monitoring at various boat landings per a schedule.
2. **Mike Honkenan, NB Public Safety Officer/Water Patrol**
  - a. Jim Fakland(sp?) will be added in addition to Mike and Brian to patrol the lake this summer.
  - b. If you have an issue call 911 and they'll work it out from there.
  - c. Patrol only do weekends before and after minimum wake
  - d. Noise from boats – The monitor asks people to manage music at the boat ramp and will request that people turn music down – including the pavilion if it's loud. Long Lake Regional Park: 651-767-0641.
  - e. Common issues
    - i. Long Lake Point – Boats parking. Enforcing that nobody can beach their boats and swim. If you're anchored 10 feet from shore, there's nothing they can do. This is an ordinance through Ramsey County that people beach their boat in designated spots by the beach only.
  - f. The county is responsible for lake rules including minimum wake ordinance.
  - g. If you're having parties and kids are using jet skis, make sure they know the rule of the lake

### **3. John Broghammer, Website Update**

- a. Site has been updated and encouraged everyone to review; [www.llianewbrighton.org](http://www.llianewbrighton.org)
- b. Send any feedback or comments to [llianewbrighton@gmail.com](mailto:llianewbrighton@gmail.com)
- c. 50% of lake owners are registered with the site. Please talk to your neighbors to promote it.
- d. We'll be adding a reoccurring payment option so credit cards are auto charged annual
- e. We'll need to look at additional ways to reach the owners that aren't registered, such as
  - i. Door knocking via neighborhood reps
  - ii. Provide materials at neighborhood night out
  - iii. Better define the services that LLIA provides

### **4. Rich Kusick**

- a. AIS Update
  - i. Regarding treatment, whatever RCWD delineates, is what LLIA will treat.
  - ii. We will work with the City of NB on funding assistance
  - iii. Ramsey County is resistant on assisting with funding
- b. Financial Review
- c. Social Ideas ~ Looking for ways to get together
  - i. LLIA Summer Picnic
  - ii. Winter Luminary Walk
  - iii. Summer Boat Flotilla
- d. Stockyard Days
  - i. Possibility of showcasing the lake with a Ski Show on Friday night of Stockyard Days prior to GB Leighton show.
- e. Rich will be stepping down as President of LLIA
  - i. John Broghammer will take over as President
  - ii. Rich will still be involved with LLIA to assist with AIS management and treatment

### **5. John Broghammer**

- a. Thanks to Rich for his service!
- b. Remember that LLIA is just a group of neighbors trying to make sure the lake is clean and safe. We have no authority but can help you understand where to go for help.
- c. Would like to add structure to LLIA per our Bylaws and will be reaching out to for volunteers that would be interested in being part of a Board of Directors or Officer position.

# Hansen Park Project

## Largest Single Project in Rice Creek Watershed District History



### Water Quality Benefits

Improved water quality to Pike and Long Lakes

Downstream phosphorus load reduction:

150-200 pounds per year

*(reducing algae growth by 20-50 tons!)*

### Flood Control Benefits

Increased flood storage capacity within park:

35.6 acre-feet – or – 11,600,000 gallons!

Reduced 10-year and 100-year flood elevations from the park downstream to Pike Lake

### PRIMARY PROJECT COMPONENTS INCLUDE:

#### Dredging and reconstruction of the Hansen Park pond

- Increases pond's capacity to hold water, improves water quality, and prevents flooding
- Replaces pond outlet, lowering the normal water level, and helps prevent flooding
- Increases the size of the pond by 2.25 acres
- Removes contaminated sediment from the pond

#### Construction of an Iron-Enhanced Sand Filter

- Removes phosphorous by pumping water through an iron-enhanced sand filter and reduces algae blooms in downstream Pike Lake and Long Lake

#### Revegetation plans to support wildlife habitat in the project area

- Expands growth of native aquatic plants in the pond
- Incorporates native plants throughout the project site

#### Reconstruction of park trails as needed in the project area

- Reduces the frequency and duration of flooding on park trails during/after large rainstorms
- Relocates the boardwalk trail east of the dam and converts it to gravel and/or woodchips
- Provides financial assistance to the City to develop new ball fields in Lions Park

#### Public Engagement and Public Spaces

- RCWD staff have participated in more than 11 public meetings and events to engage with the community for this project
- Park aesthetics, access, and enjoyment are all expected to improve because of this project



Project funding provided by a Clean Water Fund grant from the Clean Water, Land, and Legacy Amendment and the Rice Creek Watershed District



# Middle Rice Creek Restoration Project

## Restoring Historic Meanders to Improve Water Quality

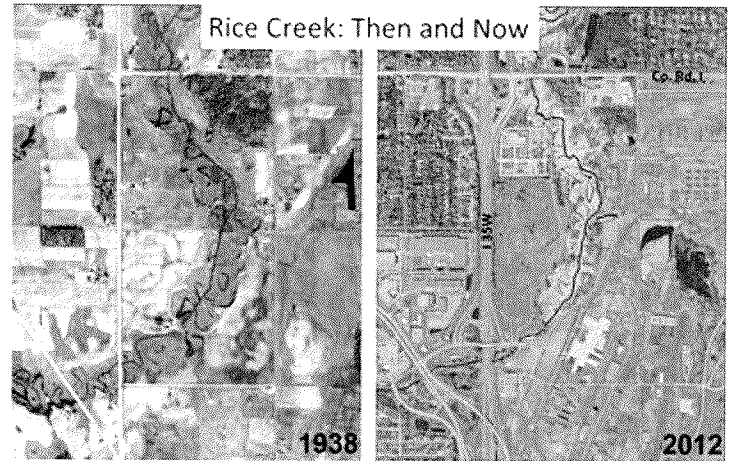
### PROJECT BACKGROUND:

#### Middle Rice Creek

- Middle Rice Creek extends from Lino Lakes to New Brighton
- Historically Middle Rice Creek had many “twists and turns” - water moved slowly and the creek provided quality habitat
- It was straightened in the early 1900s for agricultural practices

#### Concerns for the Creek

- Straightened streambanks were destabilized, water moved faster, and erosion increased
- Erosion increased the amount of sediment and phosphorus entering Long Lake
- Biological surveys indicated that the amount, condition, and diversity of fish and other aquatic life in the creek was poor
- Middle Rice Creek was placed on Minnesota’s List of Impaired Waters in 2006



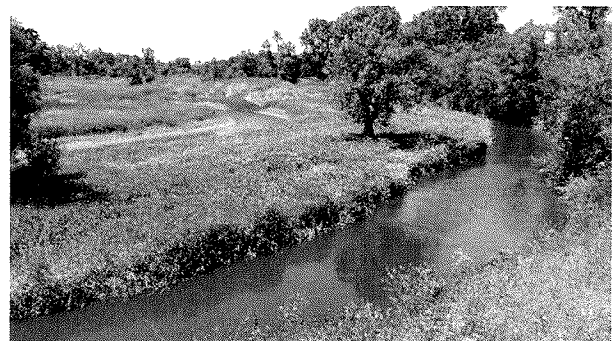
### PRIMARY PROJECT COMPONENTS:

#### Restoration of Middle Rice Creek

- Project restores historic meanders, stabilizes stream banks, and improves habitat
- Native plants and trees were used along the streambank for additional stabilization
- Reduces the sediment and phosphorus entering Long Lake
- Reduced phosphorus = reduced algae growth
- Construction began in late 2015 and was completed in early 2018

#### Outreach and Recreational Opportunities

- RCWD is partnering with Ramsey County Parks and Recreation to create trail signage
- Visit [www.ricecreek.org](http://www.ricecreek.org) for information on the Rice Creek Water Trail



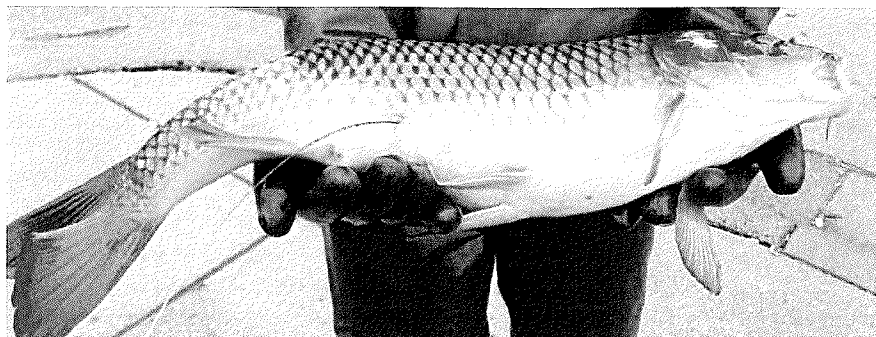
Project funding provided by a Clean Water Fund grant from the Clean water, Land, and Legacy Amendment and the Rice Creek Watershed District



[www.ricecreek.org](http://www.ricecreek.org)

# Carp Management Plan

## Managing Invasive Common Carp in the Rice Creek Watershed District



### PROJECT BACKGROUND:

#### Invasive Common Carp

- Common carp are originally from Eurasia and were introduced to the United States in the mid-1800s
- They dominate many shallow lakes, rivers, and wetlands in the United States and around the world
- High numbers (densities) of common carp create water quality problems

#### Common Carp in Rice Creek Watershed District (RCWD)

- RCWD is focusing on Long Lake (New Brighton) and the Lino Chain of Lakes; carp are very dense here
- Common carp spend their winters in Long Lake
- They migrate upstream through Rice Creek to the Lino Chain of Lakes each spring to reproduce

#### Effects of Common Carp on Water Quality and Habitat

- Carp “root” at the bottom of lakes for food, disturbing lake sediment and destroying native plants
- Nutrients are released by the carp and when the sediment is disturbed during feeding
- Excess nutrients and loss of native plants increase algae blooms and reduce water clarity

### PRIMARY PROJECT COMPONENTS:

#### RCWD Management Approach

- The Long Lake / Lino Chain of Lakes system is complex; a complex and flexible strategy is needed
- Monitoring carp movement with radio-tags and antennas helps guide strategies
- Strategies will focus on removing adult carp and limiting reproduction
- Several new technologies are being used, including ProCom low-voltage electric barriers and Whooshh

#### ProCom Low-Voltage Barrier

- Also known as “electric guidance system”
- Creates low-voltage electric field in water
- Used to block migration and guide migrating fish into traps for removal

#### Whooshh Technology

- Originally developed to harvest fruit, then modified to assist with salmon migration
- Currently being tested as a means to economically remove large numbers of migrating carp

Project funding provided by Clean Water Fund grant from the Clean Water, Land, and Legacy Amendment, Rice Creek Watershed District, LCCMR Environment and Natural Resources Trust Fund, and Minnesota Aquatic Invasive Species Research Center.

